

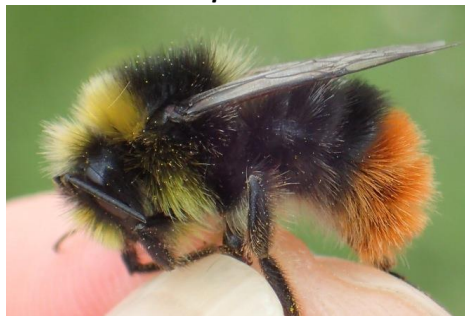
BANDED RED-TAILS

© Steven Falk 2021

Bombus pratorum male



Bombus lapidarius male



Bombus monticola male



These all have yellow-haired faces. *Pratorum* is small, fluffy with a very broad yellow collar and rather restricted orange-red tail. *Lapidarius* is more elongate and neater-haired with a narrower collar, weak midriff band and a red-tail occupying the apical third of the abdomen. *Monticola* has most of the abdomen red-haired and a yellow-haired scutellum. All three regularly fade greyish.

Bombus pratorum queen



Bombus monticola queen



Bombus rupestris unusual banded female



These are large to very large bees. *Pratorum* is a relatively small, fluffy queen with a rather restricted orange-red tail. *Monticola* is fat-looking with most of the abdomen red-haired (but this can fade yellowish in time) plus a pale scutellum fringe. The scarce banded form of *rupestris* is large and elongate with dark wings, no pollen basket on the hind legs, and a large, box-shaped head.

Bombus pratorum worker (paler)



Bombus pratorum worker (darker)



Bombus monticola worker



Pratorum workers can have tergite 2 banded or (middle) unbanded and an inconspicuous rather restricted orange-red tail. *Monticola* workers have the abdomen mostly red-haired, and a yellow-haired scutellum. Workers often carry a pollen load.

Bombus rupestris male (darker)



Bombus rupestris male (paler)



Bombus ruderarius male



Rupestris males are extremely variable and can also be black except for a red tail. In the field they are rather slim with a large, box-shaped head (typical of male cuckoo bees). The head is entirely black-haired. *Ruderarius* males typically have an inconspicuous collar and band across tergite 2. They greatly resemble some *rupestris* males but the head is less box-shaped, the eyes are larger, and the antennal flagellums are more knobby.