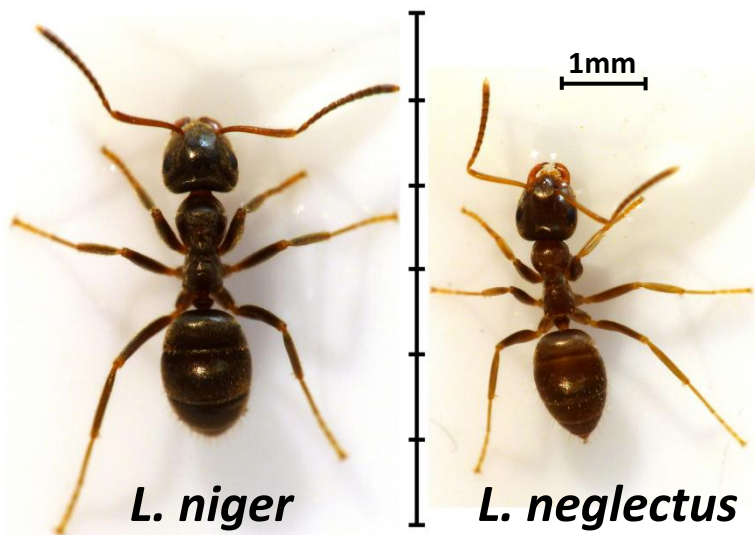


Identifying the invasive garden ant (*Lasius neglectus*)

Phillip Buckham-Bonnett, Paul Lee, Elva JH Robinson contact: pbb502@york.ac.uk

Field Characteristics

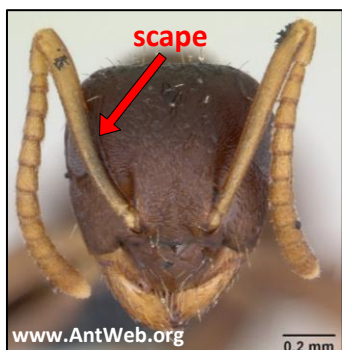
- Smaller than *L. niger*
- Lighter colour
- Often higher abundance



L. neglectus workers foraging on silver birch

Separating *L. neglectus* from UK *Lasius*

1. Body has a uniform brown colour (not yellow or black)



2. Erect hairs on antennal scape and hind tibia absent in *L. neglectus*

Antennal hairs and body colour separate *L. neglectus* from all UK *Lasius* sp. except *L. alienus* and *L. psammophilus* (which have a very different ecology). These can be eliminated by considering the dentition of the ants. The dentition can be variable (see photograph), so it is important to check multiple specimens.

3. Usually 7 teeth per mandible and 2 larger teeth at basal end. (c.f. 8 and 3) **Check at least 5 specimens.**

